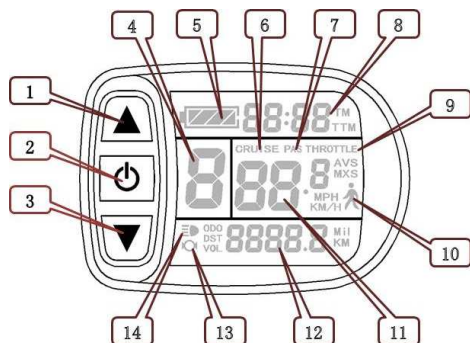


KT-LCD5 eBike Display User Manual

V1.0

Dear customer, please read this manual before you use KT-LCD5 instrument. The manual will guide you use the instrument correctly to achieve a variety of vehicle control and vehicle status display.

Functions and Display



1		UP Button	11	Km/H	Riding speed(metric)
2		SW Button		MPH	Riding speed (imperial)
3		DOWN Button		MXS	MAX speed
4	ASSIST	Pas level	12	AVS	Average speed
5		Battery capacity indicator		Km	Distance(metric)
6	CRUISE	Cruise function		Mil	Distance (imperial)
7	PAS	Power-assisted function		DST	Trip distance
8	TM	Single trip time		ODO	Total distance
	TTM	Total trip time		VOL	Battery voltage
9	THROTTLE	Throttle display			The brake display
10		6Km/H push power assist	14		Backlight and headlights

Operation

1. ON/OFF

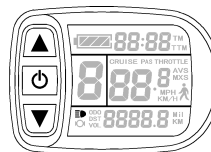
Hold button long to turn on the power, and hold long for a second time to turn off the power. When the motor stops driving and when the e-bike is not used for a consecutive 5 minutes, it will automatically shut down and turn off the motor power supply.

2. Display 1



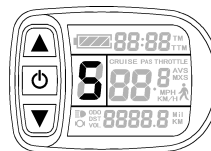
Hold button to start up and enter display 1.

2.1 Turn on backlight and headlights



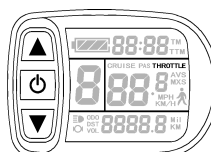
Hold long to turn on backlight and headlights (the controller should have headlight drive output function); hold long again to turn off the backlight and headlights.

2.2 Assist ratio gear (ASSIST) switch



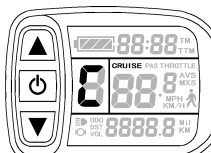
Hold or shortly to switch 1-5 file gear. Gear 1 is for the minimum power, gear 5 is for the highest power. Each startup will automatically restore the gear shutdown last time(the user can set randomly). Gear 0 is without booster function.

2.3 THROTTLE display



Turn on throttle, THROTTLE display.

2.4 Cruise function



After the cruise function is turned on, the trip riding speed is greater than 7 km/ h, hold long and enter cruise, the CRUISE lit. Brake or hold any button to cancel.

2.5 Display and delete of single Data



After power on for 5 seconds, hold ▲ and ▼ at the same time, single trip riding time (TM) and single trip distance (DST) flash, hold ⏻ button shortly, the content of both is cleared. If failed holding the button within 5 seconds, it will automatically return the display interface after 5 seconds, original content is preserved.

3. Display 2



Hold ⏻ button shortly in display 1 to enter display 2. In the riding mode after 5 seconds, display 2 automatically returns to display 1.

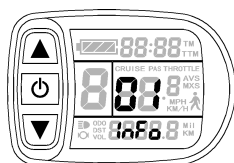
4. Display 3



Hold ⏻ button shortly in display 2 to enter display 3. In the riding condition, five seconds later, a single maximum speed (MXS) display automatically returns to the real riding speed (Km/H).

5. In display 3, hold ⏻ button shortly (SW), and the display will re-enter display 1.
6. Hold ⏻ button to turn off the display and the power supply of controller.
7. Automatically prompt interface

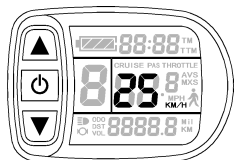
7.1 Error Code Display	Error Code	Definition
	01__info	Throttle Abnormality
	03__info	Motor hall signal Abnormality
	06__info	Motor or controller has short circuit Abnormality



Electronic control system failure will display (flashing) fault code. Once the fault was removed, it automatically exits from the fault code display interface.

General Project Setting

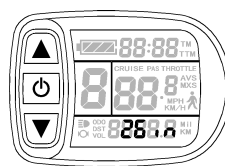
1. Set maximum riding speed



After power on for 5 seconds, hold ▲ and ▼ at the same time, and maximum riding speed Km/H and MXS flash, ▲ or ▼ shortly to hold the maximum riding speed (default 25Km/H). ⏻ button shortly and Hold go to the next parameter settings.

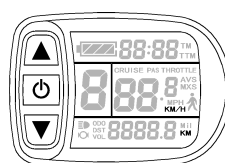
DO NOT SET ABOVE LOCAL SPEED LIMIT FOR THIS DEVICE.

2. Wheel diameter setting



The wheel diameter will be set after finishing setting the maximum riding speed, wheel diameter specifications flashes. Hold ▲ or ▼ shortly to set the specifications of wheel diameter. Select the range 6,8,10,12,14,16,18,20,22, 24,26,700c and 28 inches. Hold ⏻ button shortly and go to the next parameter settings. **FIREFLY WHEEL IS SET FOR 12" WHEEL DIAMETER.**

3. Set the metric units



The metric units will be set after finishing setting wheel diameter, Km/H and Km flash. Hold ▲ or ▼ shortly and select the three metric units of speed, mileage, and ambient temperature in synchronization.

Display	Metric	Imperial
Riding speed	Km/H	MPH
Total distance	Km	Mil

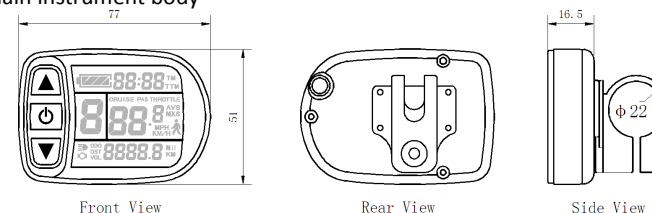
4. Km/H and Km stop flash after metric unit setting is completed. Hold ⏻ button shortly again to re-enter the maximum riding speed setting interface; or hold ⏻ button long to exit from setting environment of routine projects and save the setting values, returning to display 1.
5. Exit from routine project setting

All three routine project settings can exit from the setting environment and return to the display if hold ⏻ button long after each setting is completed, meanwhile the setting values are saved.

Under each setting interface, if the button failed holding for more than 1 minute, it will automatically return to display 1, and the setting value is invalid.

Outline Drawings and Dimensions

1. Dimensions of main instrument body



2. Wiring diagram

