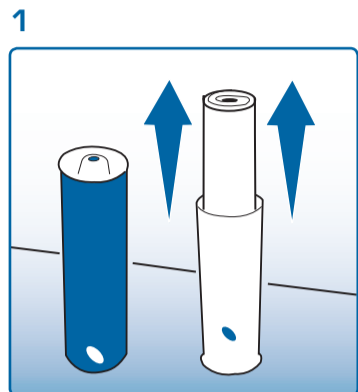




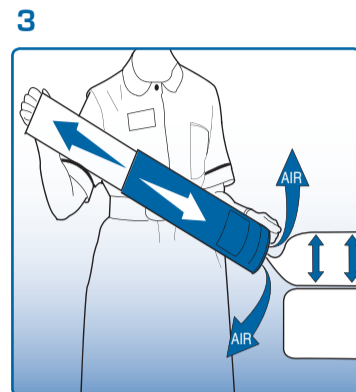
## Inflation and deflation Instructions for Mattress & Cushion



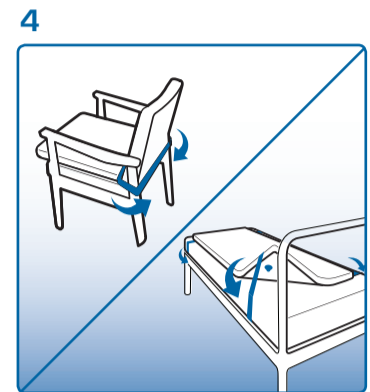
1 Remove the device from the tube and refit the two tubes together to form a pump.



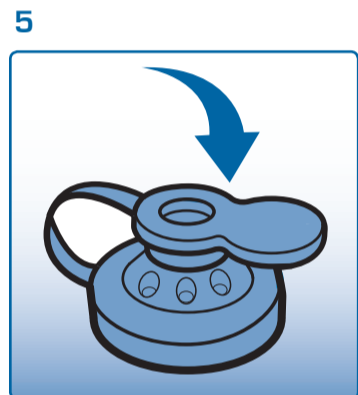
2 Connect the valve on the pump to the valve on the device - Push fit.



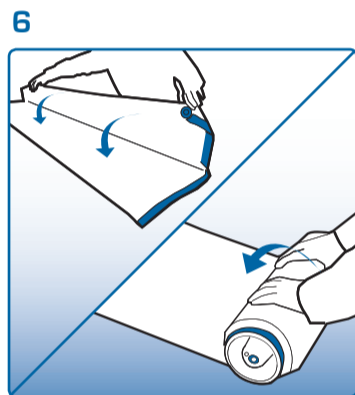
3 Inflate the device until air is heard escaping from the pump valve.



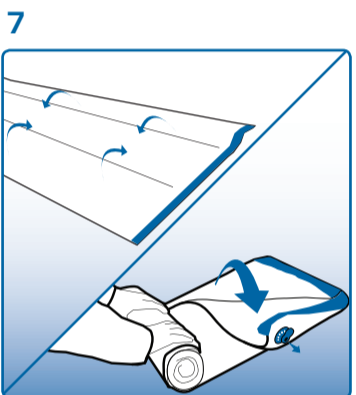
4 Cover the valve on the device using the solid end of the 'figure of eight' valve cap. Turn device over with valve underside and away from patient.



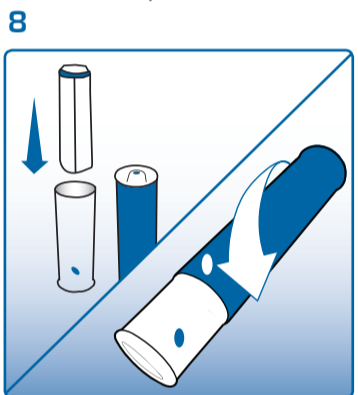
5 Insert the open end of the 'figure of eight' valve cap into the device valve. Air can now escape from the valve allowing the device to deflate.



6 Fold and roll up the device as shown starting at the point furthest away from the valve. Continue until all the air is expelled. Clean the device and allow to dry.



7 Re-fold Repose as shown and re-roll as tightly as possible to ensure all air has been removed.



8 Replace device into the pump. Refit the two tubes together and rotate outer tube until it clicks closed.

### Indications for use

Repose products provide effective pressure redistribution for all persons at risk of developing pressure ulcers, including those assessed as very high risk.

Repose is also appropriate for users with pressure related tissue damage - clinical supervision is advised where the damage is severe, in-line with NPUAP-EPUAP Pressure Ulcer Treatment Clinical Practice Guidelines 2009.

### Limitations for use

Repose is not suitable for the following:

- Persons weighing in excess of 139kg
- Persons with unstable spinal fractures
- Where body shape is such that the person cannot be fully supported by the Repose mattress overlay or cushion
- The Repose mattress overlay is suitable for use on top of a bed or trolley mattress. Use side rails in accordance with manufacturer's instructions and appropriate risk assessment
- The Repose cushion is intended for use on a static chair fitted with arm rests

### Precautions

- If deterioration in skin condition is noted, clinical advice should be sought and, if so advised, discontinue use of product
- Avoid direct contact with heat and sharp objects
- When deflated, keep away from babies and small children
- Keep away from pets

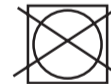
### REPOSE CAN BE CLEANED AND REUSED



WIPE CLEAN



DO NOT DRY CLEAN



DO NOT TUMBLE DRY



DO NOT IRON

REPOSE CAN BE CLEANED WITH SOAP OR DETERGENT AND WATER AND CAN BE DISINFECTED IN ACCORDANCE WITH THE INFECTION CONTROL POLICY FOR STANDARD MATTRESSES ALCOHOL & PHENOL BASED DISINFECTANTS SHOULD NOT BE USED ALLOW TO DRY BEFORE USE OR STORAGE REPOSE IS SUPPLIED WITH A MANUFACTURERS WARRANTY FOR 12 MONTHS FROM DATE OF DISPATCH

### IMPORTANT NOTICE

CHECK PRODUCT DAILY TO ENSURE CORRECT INFLATION LEVEL IN CASE OF DOUBT, REPEAT PUMPING PROCEDURES WITH THE PATIENT OFF THE PRODUCT



KEEP AWAY FROM DIRECT HEAT AND SHARP OBJECTS