

Product Catalogue

Wheelchairs | Seating System



ALU REHAB™

Thinking ahead – moving forward



Welcome to **Alu Rehab!**

Alu Rehab has chosen to focus on comfort wheelchairs, seating systems and bicycles for people with reduced ability to take part in daily activities. We are proud of our wide range of solutions making us the largest supplier of comfort wheelchairs covering needs from the active to the more passive users. Our products are developed on the thought that they should be simple to use, environmental friendly and have a long life time. We have a staff of experienced and dedicated technicians and consultants who in communication with you, as a user, relative or therapist, wishes to find the optimum solution for your needs.

In the future you can also expect Alu Rehab to deliver good, environmental friendly products.

«In dialogue
we create simple solutions
and enable joy of life»

The vision of the Alu Rehab Group

Check out our website at
www.alurehab.com

Subject to any changes made after this catalogue was published on 13.2.09.



Wheelchairs

Netti Wheelchairs – overview	4
Why choose a Netti wheelchair?	5
Unique advantages!	5
What should be considered when choosing a wheelchair?	6
Assessment of Netti wheelchair	6
Comfort factors	7
CHILDREN WHEELCHAIR	
Netti Mini	8
ALLROUND WHEELCHAIRS	
Netti Svipp allround – foldable seat	10
Netti I allround	12
Netti II	14
COMFORT WHEELCHAIRS	
Netti Svipp Comfort – foldable seat	16
Netti I comfort	18
Netti III comfort	20
Netti III comfort HD	22
Netti 4U comfort CE and CES	24
Netti 4U comfort CED and CEDS	26
Netti 4U comfort FA	28
INDIVIDUAL SOLUTIONS	
Netti Bed	28
Bariatric Users	30
Netti II FB front wheel drive	31
ACCESSORIES WHEELCHAIRS	32

Seating System

Alu Rehab Seating System – overview	43
Unique advantages with Alu Rehab Seating System	46
Why choose Alu Rehab Seating System?	46
Common properties?	47
SEAT CUSHIONS	
UNO Seat	48
Vital Base Sit	49
Vital Base Venti	50
Vital Base Royal	51
Vital Base Bondi Coxit	52
Incontinence cover Dry	53
BACK CUSHIONS	
UNO Back	54
Vital Base Smart	55
Vital Base Stabil	56
Vital Base Super Stabil	57
Flip	58

Netti wheelchairs

– designed to give you stability and comfort

CHILDREN



NETTI MINI

ALLROUND



NETTI SVIPP ALLROUND – foldable seat



NETTI I ALLROUND



NETTI II

COMFORT



NETTI SVIPP COMFORT – foldable seat



NETTI I COMFORT



NETTI III COMFORT



NETTI III COMFORT HD



NETTI 4U COMFORT|CE and CES

COMFORT



NETTI 4U COMFORT|CED and CEDS



NETTI 4U COMFORT FA

SPECIAL WHEELCHAIRS/ INDIVIDUAL SOLUTIONS



NETTI BED



BARIATRIC USERS



NETTI II FB – FRONT WHEEL DRIVE

Why choose a Netti wheelchair?

Netti comfort wheelchairs are designed to give you stability and comfort. There is a wide span of models within the Netti range. The design, combined with the inter-changeability of many parts, provides the possibility of adapting the wheelchair for your specific needs.

Alu Rehab has a policy of producing functional products, long lasting and cost effective for the users over the product life cycle.

All our wheelchairs are crash tested and approved according to the ISO 7176/19.

Good comfort is in the details!

Unique advantages with the Netti wheelchairs:

- The back has a strap system which allows separate adjustment for every section of the spine.
- The seating system in combination with our wheelchairs represents a total solution, when it comes to seating the user. We have systemized seating.
- Ergonomically solutions in frame construction:
 - Foot supports with ergonomical hinge point that moves together with the knee joint
 - Seat depth adjustment at the rear – avoiding increased load over the front castors and correct proportion to the foot support is achieved.
 - Allows variation of the seating posture – from active to relaxed positioning.
- The seat plate has a cut hole at the rear end – this allows the seat bones to sink into the cushion and get stabilized in front. This reduces the tendency of sliding forward in the seat.
- Wide choice of models within the Netti range – covers all needs and sizes.
- Inter-changeable accessories.
- Environmental friendly – recycle friendly.
- Some of our products have been in the market for 15 years – with good feedback from satisfied users.
- Value for money



What should be considered when choosing a wheelchair?

- The users' individual needs must be considered.
 - What is the general condition of the user?
 - Active or passive?
- Time spent in the wheelchair? Two hours – ten hours?
- Need for comfort and relaxation?
- Need for activity?
- Transportable? Once a year – once a week?
- Adjustment possibilities in the wheelchair:
 - Self-propelled or with attendant?
 - Manual or electrical?
- Indoor – or outdoor use?
- Special need for attendant to be taken into consideration?

Assessment Netti wheelchairs:

A correctly adjusted wheelchair is vital if the user is to be able to keep up and perform everyday activities. A wheelchair is a transfer aid that is intended to make up for a reduction in or loss of walking function. Users can spend as much as 8–10 hours a day in their wheelchair, so it is important that the chair should both be easily maneuverable and offer a high level of comfort.

In the text below you will learn how to measure to find the right size of the wheelchair.

Seat width

Measure across the hips at the widest point in an upright sitting position, add approximately 2–3 cm. Take into consideration: Be aware of the Netti seat width – the space between the armrest and the seatplate.

Purpose:

- Stability for the pelvis
- Keep the wheelchair as narrow as possible for optimum propelling and maneuverability



Seat depth

Measure from the backmost part of the bottom to the hollow of the knee, and subtract approximately 3 cm. Take into consideration: If there is a difference in thigh length, always adjust according to the shortest leg. If the user has contractions in the knee, make sure there will be no conflict between the lower leg and the seat plate. Is the user going to propel the chair using the feet? Be aware of the back support straps.

Purpose:

- Contact area/Pressure distribution
- Avoid sliding out of chair

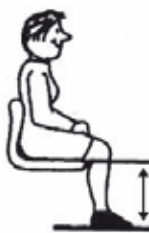


Lower leg length

Measure from the hollow of the knee to under the heels. The user should wear his daily normal footwear. Take into consideration: Is the user going to propel the chair using the feet? Should the user be able to rest the feet on the ground?

Purpose:

- Stabilization of pelvis
- Avoid sliding out of chair
- Contact area/pressure distribution
- Clearance between footplates and the ground



Height of armrest

Measure from under elbow to sitting surface, and make sure that the shoulder is relaxed.

Purpose:

- Sitting over a long period of time makes the muscles in the spine get tired
- Maintenance of posture and balance
- Alignment and support for upper extremities
- Enables the user to change position





Comfort factors – principles:

No sitting position is good for any length of time. When we sit, we need to be able to move too. A wheelchair user spends an average of 8-10 hours a day in his/her wheelchair, so it is very important that the wheelchair should be adjusted to suit the user's activities. The wheelchair should also allow relaxation.

Important factors to be considered:



«In dialogue
we create simple solutions
and enable joy of life»

The vision of the Alu Rehab Group

1 Stability

A firm base is vital when it comes to achieving the best possible stability, so it is important to choose a fixed frame wheelchair rather than a sling seat model if at all possible. Using a sling seat wheelchair will make it more difficult to stabilise the pelvis properly over time. All Netti wheelchairs (with the exception of the Netti Svipp) have a solid seat plate that offers good stability and is available with a comfort hole at the rear. This reduces the pressure on the seat bones, while providing stability for the pelvis.

2 Pressure distribution

For users at risk of developing pressure sores, it is important to have cushions that provide optimum pressure distribution. It is also important to change position as frequently as possible to avoid monotonous pressure. Once a pressure sore has developed, it is vital to relieve pressure on the area completely.

3 Microclimate

Not enough attention has been paid to this factor over the years. Recently, however, it has been discovered that microclimate is an important contributory factor in the development of pressure sores. People with a good function level can move themselves when a position becomes uncomfortable, but many people with disabilities are unable to do this. It is therefore important for the seat not to become sweaty or hot. The surface next to the user should be breathable, allowing moisture from the surface of the skin to escape. Keeping the temperature as close to normal as possible, combined with breathability and wicking, makes it possible to maintain a good, stable microclimate.

4 Room for the bottom

If a wheelchair user is to enjoy optimum sitting comfort and maintain a sitting posture over time, there needs to be enough room at the rear for the bottom. This means that the pelvis can have a neutral initial position, allowing the spine to maintain its normal curvature.

5 Support for the pelvis and lumbar region

If a person is to maintain an upright sitting posture, the pelvis needs to be stabilised. With the right support for the pelvis, less strength and balance is required from the user in the lumbar region. Stability operating in conjunction with balance gives the user greater freedom when it comes to varying his/her position.

6 Support for the feet

A good sitting posture is dependent on proper support for the feet. The position of the feet has an indirect impact on the position of the pelvis, which in turn affects the curvature of the spine and position of the head.

7 Support for the arms

Arm rests are intended to provide support for the arms, which is vital in terms of stabilising the upper body in a good sitting or resting position. They can also help the user get in and out of the chair.

8 Variation

A full understanding of the features each wheelchair offers is important in ensuring that the user gets the right solution for his/her needs. A wheelchair should allow activity and rest, while preventing monotonous pressure.





Netti® mini

– grows with the child!

- Stability and support
- Comfort and relief
- Combines activity and relaxation

Children grow quickly, and for that reason we have created **Netti Mini**, a chair with many adjustment and adaptation options. It is a wheelchair that is easy to adjust over time as the child grows, whether it is an adjustment to the seat depth, the height of the chair back or adjusting the chair to the activities the child

is involved in. That provides a good, ergonomically functional sitting position for the child. The chair is designed to be extra stabile and it has good driving capabilities. **Netti Mini** comes in 3 seat widths: 25, 30 and 35 cm, and it has a broad assortment of accessories.

Size and weight:

Item nr.	Seat width	Overall width*	Seat depth (min.–max.)	Seat height** (min.–max.)	Back height	User weight (max.)	Chair weight
23790	25 cm	49 cm	32–38 cm	42–45 cm	35 cm	90 kg	21,3 kg
23791	30 cm	54 cm	32–38 cm	42–45 cm	35 cm	90 kg	21,4 kg
23792	35 cm	59 cm	32–38 cm	42–45 cm	35 cm	90 kg	21,5 kg

* Overall width = seat width + approx. 24 cm.

** The seat height is measured from the floor to the top of the front seat plate without the seat cushion.

The wheelchair is tested by TÜV Product Service in Germany in accordance with EN 12183:1999. It is also collision tested in accordance with ISO 7176/19.







Netti® svipp allround

– the foldable chair with good driving capabilities!

- Simple adjustment of seat depth
- Small and compact during transport

For those who need a wheelchair for multiple uses, the Netti Svipp allround foldable chair is the solution. Netti Svipp allround has many adjustment possibilities and it gives you the choice to have a seating system suitable for your needs. The chair has revolvable armrests that make sideways movement easier and allow the wheelchair user to easily pull the chair in close to the

table. An extension piece for the leg supports makes it easy to adjust the leg length to the user. The chair has directional stability and good driving capabilities. The chair has a wide assortment of accessories, and everything from the sitting system in the Alu Rehab line can be integrated into the chair.

Size and weight:

SHORT

Item nr.	Seat width	Overall width*	Seat depth (min.–max.)	Seat height** (min.–max.)	Back height	User weight (max.)	Chair weight
24150	35 cm	59 cm	38–48 cm	34,5–47 cm	35 and 38 cm	125 kg	19,4 kg
24151	38 cm	62 cm	38–48 cm	34,5–47 cm	35 and 38 cm	125 kg	19,7 kg
24152	40 cm	64 cm	38–48 cm	34,5–47 cm	35 and 38 cm	125 kg	19,9 kg
24153	43 cm	67 cm	38–48 cm	34,5–47 cm	35 and 38 cm	125 kg	20,2 kg
24154	45 cm	69 cm	38–48 cm	34,5–47 cm	35 and 38 cm	125 kg	20,4 kg

LONG

24160	35 cm	59 cm	42–52 cm	34,5–47 cm	42 and 45 cm	125 kg	20,1 kg
24161	38 cm	62 cm	42–52 cm	34,5–47 cm	42 and 45 cm	125 kg	20,4kg
24162	40 cm	64 cm	42–52 cm	34,5–47 cm	42 and 45 cm	125 kg	20,6kg
24163	43 cm	67 cm	42–52 cm	34,5–47 cm	42 and 45 cm	125 kg	20,9 kg
24164	45 cm	69 cm	42–52 cm	34,5–47cm	42 and 45 cm	125 kg	21,1 kg
24165	50 cm	74 cm	42–52 cm	34,5–47 cm	42 and 45 cm	125 kg	21,6 kg
24166	55 cm	79 cm	42–52 cm	34,5–47 cm	42 and 45 cm	125 kg	21,8 kg

* Overall width = seat width + approx. 24 cm. ** The seat height is measured from the floor to the top of the front seat plate without the seat cushion.

The wheelchair is tested by TÜV Product Service in Germany in accordance with EN 12183:1999. It is also collision tested in accordance with ISO 7176/19.



WHEELCHAIRS





Netti® I allround

– the strong allround chair!

- Heavy duty
- Low seat height, well-suited for self-propelling
- Large users

Netti I allround has a strong structure and folds easily for transport. The frame has a rigid design, and electric power pack can be attached, if required. The wheelchair can be built down to a 32 cm seat height without a

seat cushion and is thus extremely well suited for self-propelling. The approved and tested user weight is up to 150 kg.

Size and weight:

Item nr.	Seat width	Overall width*	Seat depth (min.–max.)	Seat height** (min.–max.)	Back height	User weight (max.)	Chair weight
24001	35 cm	59 cm	40–50 cm	32–48 cm	48 cm	150 kg	21,3 kg
24002	38 cm	62 cm	40–50 cm	32–48 cm	48 cm	150 kg	21,4 kg
24003	40 cm	64 cm	40–50 cm	32–48 cm	48 cm	150 kg	21,5 kg
24004	43 cm	67 cm	40–50 cm	32–48 cm	48 cm	150 kg	22 kg
24005	45 cm	69 cm	40–50 cm	32–48 cm	48 cm	150 kg	22,1 kg
24006	50 cm	74 cm	40–50 cm	32–48 cm	48 cm	150 kg	22,3 kg
24007	55 cm	79 cm	40–50 cm	32–48 cm	48 cm	150 kg	25,2 kg
24008	60 cm	84 cm	40–50 cm	32–48 cm	48 cm	150 kg	25,5 kg

* Overall width = seat width + approx. 24 cm.

** The seat height is measured from the floor to the top of the front seat plate without the seat cushion.

The wheelchair is tested by TÜV Product Service in Germany in accordance with EN 12183:1999. It is also collision tested in accordance with ISO 7176/19.







Netti® II

– the active comfort wheelchair with stepless tilt!

- Simple comfort wheelchair for active users
- Tilt function allows pressure variation
- Makes getting in and out of the chair easier

For users who need a combination of a permanent back angle and tilting function to get an optimum sitting position, **Netti II** is the solution. Tilting forward makes it easier to get in and out of the wheelchair, and the user benefits from a more active sitting position at the table and the

workstation. Tilting backward provides a good resting position and pressure variation. The tilt function can be operated by the user himself or by attendant. Individual solutions are available. See the pages on customization for more information.

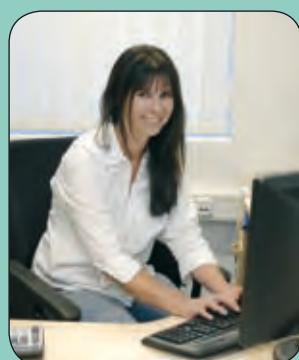
Size and weight:

Item nr.	Seat width	Overall width*	Seat depth (min.–max.)	Seat height** (min.–max.)	Back height	User weight (max.)	Chair weight
24010	35 cm	59 cm	40–50 cm	40–48 cm	48 cm	125 kg	25,1 kg
24011	38 cm	62 cm	40–50 cm	40–48 cm	48 cm	125 kg	25,2 kg
24012	40 cm	64 cm	40–50 cm	40–48 cm	48 cm	125 kg	25,3 kg
24013	43 cm	67 cm	40–50 cm	40–48 cm	48 cm	125 kg	25,9 kg
24014	45 cm	69 cm	40–50 cm	40–48 cm	48 cm	125 kg	26 kg
24015	50 cm	74 cm	40–50 cm	40–48 cm	48 cm	125 kg	26,5 kg

* Overall width = seat width + approx. 24 cm.

** The seat height is measured from the floor to the top of the front seat plate without the seat cushion.

The wheelchair is tested by TÜV Product Service in Germany in accordance with EN 12183:1999. It is also collision tested in accordance with ISO 7176/19.







Netti® svipp comfort

– for people on the move!

- Light and transportable
- Foldable
- Combines activity and relaxation

Netti Svipp comfort is the foldable chair that combines comfort and good driving capabilities and which folds easily for transport.

The user can operate the stepless back adjustment themselves, making it easy for the user to combine

an active and a relaxed sitting position. The chair has revolvable armrests that make sideways movement easier and allow the wheelchair user to easily pull the chair in close to the table.

Size and weight:

Item nr.	Seat width	Overall width*	Seat depth (min.–max.)	Seat height** (min.–max.)	Back height	User weight (max.)	Chair weight
24160RC	35 cm	59 cm	42–52 cm	40–48 cm	48 cm	125 kg	24,2 kg
24161RC	38 cm	62 cm	42–52 cm	40–48 cm	48 cm	125 kg	24,3 kg
24162RC	40 cm	64 cm	42–52 cm	40–48 cm	48 cm	125 kg	24,4 kg
24163RC	43 cm	67 cm	42–52 cm	40–48 cm	48 cm	125 kg	24,9 kg
24164RC	45 cm	69 cm	42–52 cm	40–48 cm	48 cm	125 kg	25 kg
24165RC	50 cm	74 cm	42–52 cm	40–48 cm	48 cm	125 kg	25,2 kg
24166RC	55 cm	79 cm	42–52 cm	40–48 cm	48 cm	125 kg	25,8 kg

* Overall width = seat width + approx. 24 cm.

** The seat height is measured from the floor to the top of the front seat plate without the seat cushion.

The wheelchair is tested by TÜV Product Service in Germany in accordance with EN 12183:1999. It is also collision tested in accordance with ISO 7176/19.







Netti® I comfort

– for self-propelling users!

- Low seat height, well-suited for self-propelling
- Combines activity and relaxation
- Ideal with electrical power pack

Netti I comfort is an excellent choice for people who can drive themselves. The wheelchair offers high comfort, due, e.g. to the ergonomic and functional sitting position. The wheelchair is solid and tolerates long-term and heavy use, making it good for large users, as well. The user can operate the stepless back

adjustment themselves, making it easy for the user to combine an active and a relaxed sitting position. The wheelchair can be built down to a 32 cm seat height without a seat cushion and is thus extremely well suited for self-propelling

Size and weight:

Item nr.	Seat width	Overall width*	Seat depth (min.–max.)	Seat height** (min.–max.)	Back height	User weight (max.)	Chair weight
24040	35 cm	59 cm	40–50 cm	32–48 cm	48 cm	150 kg	28,3 kg
24041	38 cm	62 cm	40–50 cm	32–48 cm	48 cm	150 kg	28,4 kg
24042	40 cm	64 cm	40–50 cm	32–48 cm	48 cm	150 kg	28,5 kg
24043	43 cm	67 cm	40–50 cm	32–48 cm	48 cm	150 kg	29,1 kg
24044	45 cm	69 cm	40–50 cm	32–48 cm	48 cm	150 kg	29,3 kg
24045	50 cm	74 cm	40–50 cm	32–48 cm	48 cm	150 kg	30 kg
24046	55 cm	79 cm	40–50 cm	32–48 cm	48 cm	150 kg	32,3 kg
24047	60 cm	84 cm	40–50 cm	32–48 cm	48 cm	150 kg	32,6 kg

* Overall width = seat width + approx. 24 cm.

** The seat height is measured from the floor to the top of the front seat plate without the seat cushion.

The wheelchair is tested by TÜV Product Service in Germany in accordance with EN 12183:1999. It is also collision tested in accordance with ISO 7176:19.







Netti® III comfort

– the complete solution for complex needs!

- Covers all needs
- Big range of accessories available

The Netti III comfort is recognized for its superiority, making it the obvious choice where quality and performance are required. With the Netti III comfort we can offer the high-comfort wheelchair that meets all needs. The Netti III comfort offers excellent stability, comfort and pressure relief. Its many adjustment and configuration options offer optimum

individual adaptability. Netti III comfort comes in six seat widths, from 35 cm to 50 cm, and has been tested and approved for user weights up to 145 kg. If you need a higher user weight, this can be resolved through individual adaptation. This is the comfort wheelchair that satisfies all needs.

Size and weight:

Item nr.	Seat width	Overall width*	Seat depth (min.–max.)	Seat height** (min.–max.)	Back height	User weight (max.)	Chair weight
20685	35 cm	59 cm	40–50 cm	40–48 cm	48 cm	145 kg	29,9 kg
20690	38 cm	62 cm	40–50 cm	40–48 cm	48 cm	145 kg	30,4 kg
20686	40 cm	64 cm	40–50 cm	40–48 cm	48 cm	145 kg	30,8 kg
20689	43 cm	67 cm	40–50 cm	40–48 cm	48 cm	145 kg	31,9 kg
20687	45 cm	69 cm	40–50 cm	40–48 cm	48 cm	145 kg	32,2 kg
20688	50 cm	74 cm	40–50 cm	40–48 cm	48 cm	145 kg	32,5 kg

* Overall width = seat width + approx. 24 cm.

** The seat height is measured from the floor to the top of the front seat plate without the seat cushion.

The wheelchair is tested by TÜV Product Service in Germany in accordance with EN 12183:1999. It is also collision tested in accordance with ISO 7176/19.







Netti® III comfort HD

– the complete solution – in a larger size!

- Cover all needs for large users
- Big range of accessories available

The Netti III comfort HD wheelchair is identical to Netti III, but has been tested and approved for a user weight up to 160 kg. The chair is very stabile and high-quality and comes with a reinforced driving wheel, double gas cylinders, whole seat plate and a choice of seat width. The chair also provides high comfort, good relief to the body, and the many adjustment

and adaptation options create the basis for optimum individual adaptation. If you need a higher weight limit, this can be resolved through individual adaptation.

With Netti III comfort HD we can offer the complete comfort wheelchair that covers all needs for large users.

Size and weight:

Item nr.	Seat width	Overall width*	Seat depth (min.-max.)	Seat height** (min.-max.)	Back height	User weight (max.)	Chair weight
20688	50 cm	74 cm	40-50 cm	45-48 cm	48 cm	160 kg	33,1 kg
20691	55 cm	79 cm	40-50 cm	45-48 cm	48 cm	160 kg	37,7 kg
20694	60 cm	84 cm	40-50 cm	45-48 cm	48 cm	160 kg	38,8 kg

* Overall width = seat width + approx. 24 cm.

** The seat height is measured from the floor to the top of the front seat plate without the seat cushion.

The wheelchair is tested by TÜV Product Service in Germany in accordance with EN 12183:1999. It is also collision tested in accordance with ISO 7176/19.







Netti® 4U comfort | CE

Netti® 4U comfort | CES

– the simple solution!

- Compact – low weight and narrow overall width
- Simple to use for both user and attendant
- Ergonomic design with excellent functionality

The Netti 4U comfort|CE is created to meet the need for comfort and relaxation.

The armrest and footrest are easily removed to facilitate sideways transfer.

The wheelchair's narrow overall width and excellent manoeuvrability make it ideal for rooms with limited space.

Thanks to its low weight and simple folding mechanism, the wheelchair is easy to handle.

The Netti 4U comfort|CES is identical to the Netti 4U comfort|CE, but 50 mm shorter.

Size and weight – Netti 4U comfort|CE:

Seat width	Overall width*	Seat depth (min.–max.)	Seat height** (min.–max.)	Back height	User weight (max.)	Chair weight
35 cm	53 cm	42–52 cm	46–50 cm	48 cm	125 kg	27,5 kg
40 cm	58 cm	42–52 cm	46–50 cm	48 cm	125 kg	28,0 kg
45 cm	63 cm	42–52 cm	46–50 cm	48 cm	125 kg	28,5 kg
50 cm	68 cm	42–52 cm	46–50 cm	48 cm	125 kg	29,0 kg

Size and weight – Netti 4U comfort|CES:

Seat width	Overall width*	Seat depth (min.–max.)	Seat height** (min.–max.)	Back height	User weight (max.)	Chair weight
35 cm	53 cm	37–50 cm	44–48 cm	48 cm	125 kg	26,5 kg
40 cm	58 cm	37–50 cm	44–48 cm	48 cm	125 kg	27,0 kg
45 cm	63 cm	37–50 cm	44–48 cm	48 cm	125 kg	27,5 kg
50 cm	68 cm	37–50 cm	44–48 cm	48 cm	125 kg	28,0 kg

* Overall width = seat width + approx. 18 cm.

** The seat height is measured from the floor to the top of the front seat plate without the seat cushion.

The wheelchair is tested by TÜV Product Service in Germany in accordance with EN 12183:1999. It is also collision tested in accordance with ISO 7176/19.





Netti® 4U comfort | CED

Netti® 4U comfort | CEDS

– makes everyday life easier for user and attendant!

- Compact – low weight and narrow total width
- Simple to use
- Ergonomic design with excellent functionality

Netti 4U comfort|CED is a multifunctional, comfort wheelchair in an outstanding ergonomic design with a narrow overall width and low weight. The wheelchair is therefore also well-suited to tight spaces and narrow door openings. The low weight and the collapsible frame make it easy to transport the wheelchair.

The chair has good ergonomic solutions and is user-friendly with functional red adjustment points.

The armrests are revolvable, making it easier to move sideways and use a lifting belt. The sitting unit is adapted individually and provides good stability, support and comfort.

The Netti 4U comfort|CEDS is identical to the Netti 4U comfort|CED, but 50 mm shorter.

Size and weight – Netti 4U comfort|CED:

Item nr.	Seat width	Overall width*	Seat depth (min.-max.)	Seat height** (min.-max.)	Back height	User weight (max.)	Chair weight
28423	35 cm	53 cm	42-52 cm	46-50 cm	48 cm	140 kg	28 kg
28424	40 cm	58 cm	42-52 cm	46-50 cm	48 cm	140 kg	28,5 kg
40608	43 cm	61 cm	42-52 cm	46-50 cm	48 cm	140 kg	28,7 kg
28370	45 cm	63 cm	42-52 cm	46-50 cm	48 cm	140 kg	29 kg
28425	50 cm	68 cm	42-52 cm	46-50 cm	48 cm	140 kg	30 kg
40616	55 cm	73 cm	42-52 cm	46-50 cm	48 cm	140 kg	31 kg
40617	60 cm	78 cm	42-52 cm	46-50 cm	48 cm	140 kg	32 kg

Size and weight – Netti 4U comfort|CEDS:

Item nr.	Seat width	Overall width*	Seat depth (min.-max.)	Seat height** (min.-max.)	Back height	User weight (max.)	Chair weight
40875	35 cm	53 cm	37-50 cm	44-48 cm	48 cm	130 kg	24 kg
40876	40 cm	58 cm	37-50 cm	44-48 cm	48 cm	130 kg	24,5 kg
40877	43 cm	61 cm	37-50 cm	44-48 cm	48 cm	130 kg	24,7 kg
40878	45 cm	63 cm	37-50 cm	44-48 cm	48 cm	130 kg	24,9 kg
40879	50 cm	68 cm	37-50 cm	44-48 cm	48 cm	130 kg	25,5 kg

* Overall width = seat width + approx. 18 cm.

** The seat height is measured from the floor to the top of the front seat plate without the seat cushion.

The wheelchair is tested by TÜV Product Service in Germany in accordance with EN 12183:1999. It is also collision tested in accordance with ISO 7176/19.





Netti® 4U comfort | FA

– being totally adjustable – means less is more!

- Only 2 sizes replace a complete range of seat widths

The complete seat unit (seat plate, foot supports, arm supports & backrest) is adjustable, which again offers ergonomically fitting for each individual. Netti 4U comfort|FA is easily adaptable to individual needs. Backrest- and seat cushions can be exchanged with all products included in the Alu Rehab Seating

System. Integrated side supports are included in the standard version of Netti 4U comfort|FA backrest cushion. Variation is crucial to prevent pressure ulcers. In Netti 4U comfort|FA the tilt and recline functions offer a good possibility for varying the seating position. The forward tilt enables easy transfer.

Size and weight:

Item nr.	Seat width	Overall width*	Seat depth (min.-max.)	Seat height**	Back height	User weight (max.)	Chair weight
42076	35-44 cm	53-62 cm	39-51 cm	50 cm	48 cm	140 kg	34 kg
42077	44-53 cm	62-71 cm	39-51 cm	50 cm	48 cm	140 kg	35 kg
41300 with drumbrake	35-44 cm	53-62 cm	39-51 cm	50 cm	48 cm	140 kg	34 kg
41301 with drumbrake	44-53 cm	62-71 cm	39-51 cm	50 cm	48 cm	140 kg	35 kg

* Overall width = seat width + approx. 18 cm.

** The seat height is measured from the floor to the top of the front seat plate without the seat cushion.

The wheelchair is tested by TÜV Product Service in Germany in accordance with EN 12183:1999. It is also collision tested in accordance with ISO 7176/19.



Netti Bed and Netti Bed Electric

- Electrical lifting/lowering mechanism
- Individually adaptable
- Back rest
- Adjustable tilt on the reclining unit



Netti Bed is designed to make moving and changing positions easier for people who are not able to use a regular wheelchair. Netti Bed is built on a Netti chassis, where the length and height of the reclining unit is individually adaptable. The reclining unit can be tilted in both directions or limited to one direction, if desired.

Netti Bed can be delivered with an adjustable back rest. Hinge point and swing are individually adaptable. The mattress is adapted to the user's weight for optimum pressure distribution. The bottom of the bed is perforated for air circulation under the mattress.

We provide custom solutions to suit your needs!



Bariatric* users

- reinforced wheelchairs with seat width up to 110 cm and user weight up to 450 kg



* Bariatrics is the branch of medicine that deals with the causes, prevention, and treatment of obesity.

In recent years Alu Rehab has seen increasing demand for solutions for bariatric users in all of our markets. Alu Rehab's staff of experienced technicians and experts can adapt wheelchairs to most needs. Alu Rehab can offer, e.g. reinforced wheelchairs with a seat width of 110 cm and a user weight up to 450 kg.

Example of special adaption for bariatric users: For variation and relief, the chair has electrical accessories that adjust the seat and back independently of each other. In addition to the product having to withstand a high user weight, it is particularly important that the back and seat are adapted to the shape of the body that

is using the chair. Such solutions are adapted individually as needed.

Alu Rehab has expertise and experts who specially adapt wheelchairs and extra equipment that are not part of the standard equipment available on the market. Alu Rehab meets various challenges in close collaboration and dialogue with the professional circles in Norway. This can include special accessory solutions, such as special tables, special armrests and leg supports, side supports, lifting and lowering function, or expanded tilting options, to name a few examples.

We provide custom solutions to suit your needs!





Netti II FB (Front Back)

– the wheelchair with front-wheel drive and tilt!

Netti II FB is the wheelchair for users who have lost strength and movement in their arms, or who are dependent upon sitting in a forward-leaning position. Large front wheels and a flywheel on the back create a wheelchair with extremely good manoeuvring capabilities. Free space between the seat and the back provides ample opportunity to use legs for forward propulsion. The chair is suited for indoor use where space is tight, and the chair is designed to put less strain on thresholds. The leg supports are located

between the flywheels and this makes the total length of the chair extra short. Netti II FB has a tilt function that can be operated either by the user or by a companion.

Maximum user weight: 125 kg.

The wheelchair was tested by TÜV Product Service in Germany according to European standard EN 12183:1999.

We provide custom solutions to suit your needs!





Accessories

A unique feature of the Netti wheelchairs is the vast amount of accessories available. We provide customized solutions according to your needs.

Head supports

We have developed 4 kinds of head supports to meet the needs of the various needs of the users. These head supports fit all the Netti chairs. The head supports are attached to a bracket on the back of the chair and can be adjusted vertically, horizontally and in angle.



Head support Mini (with side support).

Name: Head support Mini (with side support)
Item nr: 23973



Head support A (with side support). This head support is good for users with reduced stability and head control. Standard on Netti 4U comfort/CE/CES/CED and CEDS chairs.

Name: Head support A (with side support)
Item nr: 40880



Head support B (small). Good for users who need some support in a reclined/tilted position.

Name: Head support B (small)
Item nr: 40881



Head support C (large).

Name: Head support C (large)
Item nr: 40882



Removable cover for improved hygiene.

Name: Hygiene cover for head support A
Item nr: 40883
Name: Hygiene cover for head support B
Item nr: 40884
Name: Hygiene cover for head support C
Item nr: 40885



Head cushion Butterfly. This is a comfortable soft cushion that can be used as a soft support between the head support and the neck. The cushion is supplied with a strong rubber band for easy attachment.

Name: Head cushion Butterfly
Item nr: 3950



Comfort head cushion.

Name: Comfort head cushion with kosproflex
Item nr: 3952
Name: Comfort head cushion with ClimaTherm
Item nr: 3955



Head support fixation bracket. Ideal when the head support is exposed to hard usage.

Name: Head support fixation bracket
Item nr: See pricelist



Vertical stems. The vertical stems come in three different lengths 200, 300 and 500 mm.

Name: Vertical stem 300 mm
Item nr: 20998
Name: Vertical stem 500 mm
Item nr: 21054
Name: Vertical stem Mini – 200 mm
Item nr: 23796



Horizontal stems. The horizontal stems come in three different lengths 150, 250 and 380 mm.

Name: Horizontal stem std. 150 mm std.
Item nr: 20316
Name: Horizontal stem 250 mm
Item nr: 20318
Name: Horizontal stem 380 mm
Item nr: 20372

Belts and straps

Alu Rehab has a number of different belts and straps. The sortiment includes H-Belts and Hip Belt with a choice of padded or not padded plastic lock or a car belt lock. The length of the belt is standard but can easily be cut to the required size after mounting.



Simple hip belt with car belt lock or plastic lock.

Name: Simple hip belt with car lock
Item nr: 20844
Name: Simple hip belt with plastic lock
Item nr: 20858



Upholstered hip belt with car belt lock or plastic lock.

Name: Upholstered hip belt with car belt lock
Item nr: 20845
Name: Upholstered hip belt with plastic lock
Item nr: 20859



Attachment bar for hip belt.

Name: Attachment bar for hip belt
Item nr: 20542
(Included with all belts).



Abduction belt.

Name: Abduction belt - leather
Item nr: 21012
Name: Abduction belt neoprene
Item nr: 21011



H-belt simple with car lock or plastic lock.

Name: H-belt simple with car lock
Item nr: 20877
Name: H-belt simple with plastic lock
Item nr: 20930



H-belt upholstered with car belt lock or plastic lock.

Name: H-belt upholstered with car belt lock
Item nr: 20881
Name: H-belt upholstered with plastic lock
Item nr: 20859



H-belt attachment bar. It is fitted onto the push handles and is adjustable in height. It is telescopic and comes in two sizes.

Name: H-belt attachment bar for seatwidth 25 - 38 cm
Item nr: 25949
Name: H-belt attachment bar for seatwidth 40 - 60 cm
Item nr: 25441



H-belt on Netti Mini.

Seat and back unit

All Netti wheelchairs except for Netti Svipp and Netti 4U have a solid seat plate – comfort plate or sliding plate. The configuration varies between the markets. The comfort plate has a cut hole at the rear covered with a strong mesh fabric. The hole allows the Ischii Tuberositas (seat bones) to sink into the cushion and get stabilized on front. This reduce the tendency of sliding forward in seat.



Seat plate Comfort.

Name: Seat plate Comfort
Item nr: See pricelist



Sliding seat plate.

Name: Sliding seat plate
Item nr: See pricelist

Adjustment of seat depth

Length of thighs might vary to individual differences or to surgical operation of the hip etc. This can easily be accommodated by pulling out the foot support in front on either side of the wheelchair. This ensures a correct movement on the foot. The depth of the chair can be adjusted on all Netti wheelchairs. On the fixed frame chairs, the depth is always adjusted at the rear. This is ergonomically the best principle for adjusting depth. Avoiding increased load over the front castors and correct proportion to the foot support is achieved. All Netti chairs can be adjusted 10 cm with standard parts. By changing some components even longer seat depths can be achieved. The minimum seat depth varies from model to model.



Adjustment of seat depth.



By changing some components even longer seat depths can be achieved.



Aluminium back. This solution replaces the Velcro back on the Netti wheel-chair giving a fixed and more solid base for the backrest cushion.

Name: Aluminium back
Item nr: See pricelist



Back extender. For tall users or users who need extra high back support a back extender can easily be mounted.

Name: Back extender – round (Models before June 2004)
Item nr: 21612
Name: Back extender
Item nr: 24036



Lumbar support. The lumbar support can be used in addition to the standard backrest to increase the curvature of the integrated lumbar support.

Name: Lumbar support Mini str. 25–30 cm.
Item nr: 2837
Name: Lumbar support str. 35–40 cm.
Item nr: 2838
Name: Lumbar support str. 45–50 cm.
Item nr: 2839



The wedge cushion is used for increased sideways stability. It can be used on either or both sides. The cushions are placed between the frame and backrest. These are cost effective solutions.

Name: Wedge cushion
Item nr: 21048



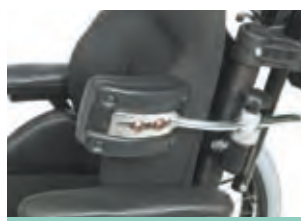
Side support Correction This is a correctional side support. It is meant for users who need support directly on the body. Best performance is achieved in combination with the Flip backrest cushion as shown in the picture. Good solution for flexible scoliosis. It is adjustable in height, depth in combination with rotating pad.

Name: Side support correction right
Item nr: 27375
Name: Side support correction left
Item nr: 27374
Padding is available



Side support Stabil This is a stabilizing side support. It is meant for users with reduced stability in the upper trunk. Used in combination with Smart, Stabil or Super Stabil backrest a very stable seating position is achieved, It is adjustable sideways and in height and has a very safe and user friendly locking system.

Name: Sidesupport stabil right
Item nr: 26843
Name: Sidesupport stabil left
Item nr: 26830
Padding is available



Side support Mini This side support rotates around the backrest tube before fixation and it is adjustable in depth and height.

Name: Side support Mini
Item nr: 24218

Side support

For users with heavily reduced stability a stronger side support may be necessary. These support are attached to the backrest tubes and have different adjustability.



Vital Base Integral prevents sliding out of the seat.

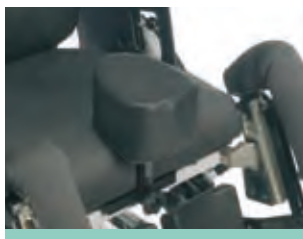
Name: Vital Base Integral
Item nr: 1299



Knee and thigh support reduces adduction.

Name: Knee and thigh support
Item nr: 20830

For some users sliding out of the chair is a problem. Extra pelvis support will prevent this. Vital Base Integral is a separate plate that can be used on all kinds of wheelchairs. The Vital Base Integral pelvis supporter will have a very positive effect on sling seat wheelchairs as it prevents the bad hammock effect. The plate is put into cushions and can easily be fitted to different seat widths.



The abduction block.

Name: Abduction block str. 1
Item nr: 27490
Name: Abduction block str. 2
Item nr: 27491
Name: Abduction block str. 3
Item nr: 27492



The abduction block.

Name: Abduction block Mini
Item nr: 24297

The abduction block is meant to reduce abduction of the knees. For some users the abduction block may also prevent subluxation of the hip.

Arm support

The Netti wheelchairs come with different arm supports. A vast number of arm support pads are available to meet individual demands. These can be used on all kinds of Netti chairs.



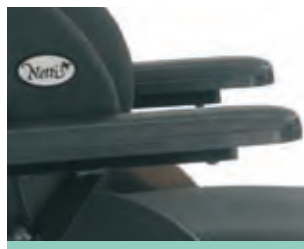
Arm support std. (Netti I, II og III)

Name: Arm support std. (left)
Item nr: 21681
Name: Arm support std. (right)
Item nr: 21682



Arm support Svipp.

Name: Arm support Svipp (right)
Item nr: 23226
Name: Arm support Svipp (left)
Item nr: 23234



Arm support Netti Mini.

Name: Arm support Mini (right)
Item nr: 23578
Name: Arm support Mini (left)
Item nr: 23584 (ve.)



Arm support Netti 4U/CED og CEDS.

Name: Arm support Netti 4U
Item nr: 28609 left
Name: Arm support Netti 4U
Item nr: 28610 right



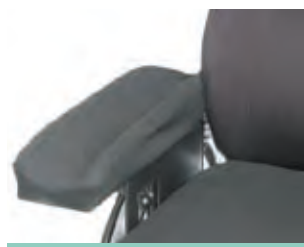
Arm support pad curved

Name: Arm support pad curved
(right and left)
Item nr: 29139



Arm support pads in different sizes are available.

Name: Arm support pad std.
Item nr: 20835
Name: Arm support long and wide
Item nr: 29138
Name: Arm support long
Item nr: 29136
Name: Arm support pad wide
Item nr: 29137
Name: Arm support pad short
Item nr: 29135



Hemiplegic arm support.
The hemiplegic arm support makes the wheelchair suitable for e.g. stroke patients.

Name: Hemiplegic arm support
(right)
Item nr: 22186
Name: Hemiplegic arm support
(left)
Item nr: 22185



Hemiplegic cushion.
This cushion gives freedom to move the affected arm in a required position. It is mounted on a standard arm support.

Name: Hemiplegic cushion "Hareid"
Item nr: 3954



Comfort pads to Netti I, II and III.

Name: Comfort pads
2,5 cm
Item nr: 22149
Name: Comfort pads
3,5 cm
Item nr: 22150
Name: Comfort pads
4,5 cm
Item nr: 22151



Comfort pads to CED and CEDS.

Name: Comfort pads to CED/CEDS
models
Item nr: 29486 right
Item nr: 29487 left



Comfort pads Netti Mini.

Name: Comfort pads Netti Mini
– only in 2,5 cm
Item nr: 24253 right
Item nr: 24252 left

Comfort pads

In some cases it is beneficial to have the possibility to adjust the width of chair somewhat. This may be when the user needs a wide back rest, but is more narrow over the hips. On all Netti chairs the seat width adjusted by using pads on the skirt guards. 3 sizes are available 2,5, 3,5 and 4,5 cm (for Netti I/II and III) – see details for the other.

Push handles

Push handles can be swung in- and outwards and are delivered in 30 cm or 50 cm length.



Push handles can be swung in – and outwards and are delivered in 30 cm or 50 cm length

Name: Push handles 300 mm.
Item nr: 21754
Name: Push handles 500 mm.
Item nr: 21808



Push bow.

Name: Push bow for sw. 35 cm.
Item nr: 25582
Name: Push bow for sw. 38 cm.
Item nr: 25583
Name: Push bow for sw. 40 cm.
Item nr: 25584
Name: Push bow for sw. 43 cm.
Item nr: 25585
Name: Push bow for sw. 45 cm.
Item nr: 25586
Name: Push bow for sw. 50 cm.
Item nr: 25587
Name: Push bow for sw. 55 cm.
Item nr: 25588
Name: Push bow for sw. 60 cm.
Item nr: 25589



Push bow Mini.

Name: Push bow for sw. 25 cm.
Item nr: 25580
Name: Push bow for sw. 30 cm.
Item nr: 25581
Name: Push bow for sw. 35 cm.
Item nr: 25582

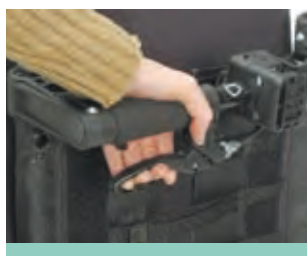
Release handles for tilt and recline

In case the user wants to be able to adjust the recline and tilt function themselves, the release handle can be moved from the back of the chair to the arm support. This can be mounted on both right and left side.



Release handle for tilt and recline – mounted on right or left side armsupport.

Name: Release handle (right)
Item nr: 26190
Name: Release handle (left)
Item nr: 26191



Release handle mounted on the push handles.

Name: Release handle – mounted on the push handles
Item nr: 20463

Trays and Upholstry

Useful universal trays for all widths of the chairs can be delivered. The standard tray comes without upholstery. Upholstery comes in two different sizes. A reading tray can be mounted to the universal tray.



Universal trays come in 3 sizes.

Name: Universal tray mini
Item nr: 15102
Name: Universal tray medium
for seat width 35 – 43 cm
Item nr: 15100
Name: Universal tray large for
seat width 43–50 cm
Item nr: 15101

For seat width 55 and 60 cm we
offer a Plexi tray. See pricelist.



Upholstry come in 2 sizes.

Name: Upholstry medium (right)
Item nr: 15042
Name: Upholstry medium (left)
Item nr: 15043
Name: Upholstry large (right)
Item nr: 15040
Name: Upholstry large (left)
Item nr: 15041



Reading tray and universal tray used together.

Name: Universal tray for reading
tray mini
Item nr: 15006
Name: Universal tray for reading
tray medium (35–43)
Item nr: 15050
Name: universal tray for reading
tray large (43–50)
Item nr: 15051



Reading tray.

Name: Reading tray for universal
tray, medium
Item nr: 15075
Name: Reading tray for universal
tray, large.
Item nr: 15076



Universal tray with lock.

Name: Universal tray with lock,
for Mini, sw: 25–35 cm
Item nr: 15123
Name: Universal tray with lock,
medium, sw: 35–40 cm
Item nr: 15124
Name: Universal tray with lock,
large, sw: 43–50.
Item nr: 15125



Swing able tray. It is swing able with
the possibility to hang on the side of
the chair. It does not conflict with
the main wheels in this position.
A solid tray with lock.

Name: Swing able tray, mini
sw: 25–35 cm
Item nr: 15139
Name: Swing able tray medium,
sw: 35–40 cm
Item nr: 15140
Name: Swing able tray, large
sw: 43–50 cm
Item nr: 15141



Half tray. Swing able upholstered half
tray. This tray replaces the existing
standard arm support.

Name: Half tray (left)
Item nr: 23979
Name: Half tray (right)
Item nr: 23978

FIT **NOT FIT** Which tray fits which wheelchair model (with standard arm support):

FITS WHEELCHAIR MODEL AND SIZE

TRAY	Universal small – item 15102	Universal medium – item 15100	Universal large – item 15101	Universal swingable small – item 15139	Universal swingable medium – item 15140	Universal swingable large – item 15141	Universal lockable small – item 15123	Universal lockable medium – item 15124	Universal lockable large – item 15125	Plexi tray 55 cm – item 21608	Plexi tray 60 cm – item 21609	Universal swingable medium CED/CEDS – item 28826	Universal swingable large CED/CEDS – item 28832	Universal lockable medium CED/CEDS – item 28838	Universal lockable large CED/CEDS – item 28836
Netti Mini	Netti Mini 25, 30 cm	Netti Mini 35 cm	Netti Mini	Netti Mini 25, 30 cm	Netti Mini 35 cm	Netti Mini	Netti Mini 25, 30 cm	Netti Mini 35 cm	Netti Mini						
Netti I/II/III	Netti I/II/III 35, 38, 40 cm	Netti I/II/III 35, 38, 40 cm	Netti I/II/III 43, 45, 50 cm	Netti I/II/III	Netti I/II/III 35, 38, 40 cm	Netti I/II/III 43, 45, 50 cm	Netti I/II/III	Netti I/II/III 35, 38, 40 cm	Netti I/II/III 43, 45, 50 cm	Netti I/II/III 55 cm with wide arm support	Netti I/II/III 60 cm with wide arm support				
Netti 4U CE/CES/FA	Netti 4U CE/CES/FA 35, 40 cm	Netti 4U CE/CES/FA 35, 40 cm	Netti 4U CE/CES/FA 45, 50 cm	Netti 4U CE/CES/FA	Netti 4U CE/CES/FA 35, 40 cm	Netti 4U CE/CES/FA 45, 50 cm	Netti 4U CE/CES/FA	Netti 4U CE/CES/FA 35, 40 cm	Netti 4U CE/CES/FA 45, 50 cm						
Netti 4U CED/CEDS	Netti 4U CED/CEDS	Netti 4U CED/CEDS	Netti 4U CED/CEDS	Netti 4U CED/CEDS	Netti 4U CED/CEDS	Netti 4U CED/CEDS	Netti 4U CED/CEDS	Netti 4U CED/CEDS	Netti 4U CED/CEDS			Netti 4U CED/CEDS 35, 40 cm	Netti 4U CED/CEDS 43, 45 50 cm	Netti 4U CED/CEDS 35, 40 cm	Netti 4U CED/CEDS 43, 45 50 cm
Netti Svipp	Netti Svipp 35, 38 40 cm	Netti Svipp 35, 38 40 cm	Netti Svipp 43, 45 50 cm	Netti Svipp	Netti Svipp 35, 38 40 cm	Netti Svipp 43, 45 50 cm	Netti Svipp	Netti Svipp 35, 38 40 cm	Netti Svipp 43, 45 50 cm						

Brakes and brake handles

Users with reduced mobility and weakened function in the fingers may need longer brake handles for easier function of the brakes. The brakes can be mounted on the upper or bottom frame tube and there are several alternatives.



Brake to the Netti 4U models.

Name: Brake for Netti 4U models
- right
Item nr: 28844
Name: Brake for Netti 4U models,
left
Item nr: 28845



Brake universal – small.

Name: Brake universal small
- right
Item nr: 26852
Name: Brake universal small
- left
Item nr: 26853



Brake universal large.

Name: Brake universal large – right
Item nr: 26817
Name: Brake universal large – left
Item nr: 26824



Brake handles.

Name: Brake handles std 90 mm.
Item nr: 20353
Name: Brake handles 150 mm.
Item nr: 21058
Name: Brake handles 250 mm.
Item nr: 21059

Foot support

Foot support can be delivered in two different models as angle adjustable and universal which is angle adjustable in fixed positions. Both models are swing and removeable and easy to assemble on and off.



Angle adjustable foot support.

Name: Angle adjustable foot
support.
Item nr: See pricelist



Knee upholstery. You can also get knee upholstery with EasyCare textile.

Name: Knee upholstery to the
Angle adjustable foot
support.
Item nr: 40886



Universal foot support.

Name: Universal foot support left.
Item nr: 26723
Name: Foot support right.
Item nr: 25824



Foot boxes can be delivered to each size of the chairs.

Name: Foot box.
Item nr: See pricelist



Amputation support.

Name: Amputation support.
Item nr: See pricelist



Abduction front. Places the foot support 2.5 cm out from the frame, allowing room for abducted knees.

Name: Abduction front left.
Item nr: 24110
Name: Abduction front right.
Item nr: 24109



Extra upholstery for the calf support bracket prevents pressure points.

Name: Upholstery for the calf support bracket.
Item nr: 21745



Calf supports are depth and height adjustable.

Name: Calf supports std. with bracket.
Item nr: See pricelist



Calf support hinged. This is possible to move back under the chair by using a release handle. This makes removing the foot support much easier.

Name: Calf support hinged.
Item nr: See pricelist



Foot plates are delivered in correct widths according to wheelchair sizes. An easily operated lock between the plates ensures a solid foundation for the feet.

Name: Foot plates – diff. sizes.
Item nr: See pricelist



Upholstery for foot plate.

Name: Upholstery for foot plate.
Item nr: See pricelist



Heel straps in different sizes.

Name: Heel straps.
Item nr: See pricelist



Foot board with lock. A very rigid footplate which is easy to mount and take off. It is easily removed by using a locking mechanism on the right side.

Name: Foot board with lock.
Item nr: See pricelist



Calf strap – with upholstery.

Name: Calf strap with upholstery.
Item nr: 21293



The calf strap can be used on all models, it can easily be adjusted to the needed length.



Name: Extension piece for foot support left.
Item nr: 27384



Name: Extension piece for foot support right.
Item nr: 27385

Main wheels

The Netti wheelchairs have main wheels with solid tires in different sizes. Quick release axles enable smooth assembly and folding of the chair. Standard width of the tires is 1" but 1 3/8" is another option.



Quick release on main wheel.

Name: 20" x 1" main wheel.
Item nr: 25370
Name: 22" x 1" main wheel.
Item nr: 25371
Name: 24" x 1" main wheel.
Item nr: 25372
Name: 26" x 1" main wheel.
Item nr: 25519
Name: Main wheel with 1 3/8".
Item nr: See pricelist
Name: Main wheel Magnesium 24"
for heavy users over 140 kg.
Item nr: 20306



Push rims.

Name: Push rim.
Item nr: See pricelist
Name: Push rim for better grip.
Item nr: See pricelist



Spoke protectors Spoke protectors can be delivered transparent or can also be delivered with different motives such as Lightning, Blue Bat, Feet, Tiger, Energy and Spider.

Name: Spoke protectors transparent.
Item nr: See pricelist
Name: Spoke protectors with diff. motives.
Item nr: See pricelist



Frame extender makes it possible to mount the main wheels further back.

Name: Frame extender to:
Netti I/II/III/Mini.
Item nr: 20824



Main wheel adapter for Netti Svipp.

Name: Main wheel adapter for Netti Svipp.
Item nr: 24958



Camber adapter. Can be delivered in 2° or 4°.

Name: Camber adapter 2°.
Item nr: 21923
Name: Camber adapter 4°.
Item nr: 21924



Main wheel with companion brake Companion brakes are working directly to the hub of the main wheel with brake handles attached the driving handles. Companion brakes are delivered in complete set from 12" to 26" main wheel.

Name: Companion brake 12" main wheel.
Item nr: 23175
Name: Companion brake 20" main wheel.
Item nr: 25472
Name: Companion brake 22" main wheel.
Item nr: 24365
Name: Companion brake 24" main wheel.
Item nr: 24310



Main wheel with one hand drive 20"-24" main wheels can be delivered with one hand drive.

Name: Main wheel with one hand drive 20" x 1 3/8.
Item nr: 20780
Name: Main wheel with one hand drive 22" x 1 3/8.
Item nr: 20781
Name: Main wheel with one hand drive 24" x 1 3/8.
Item nr: 20832
Name: Main wheel with one hand drive 26" x 1 3/8.
Item nr: 24157



Telescopic bar for main wheel with one hand drive is inclusive.



Easy Wheel can be delivered in: 20", 22", 24" and 26". Makes manouver and driving of the wheelchair much easier.

Name: Easy Wheel.
Item nr: See pricelist



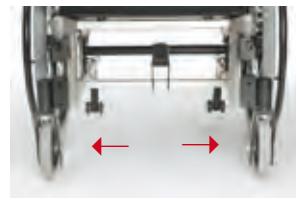
Front forks. Different front forks to be used with the front castors.

Name: Front forks diff.sizes.
Item nr: See pricelist



Different front castors.

Name: Front castor 3".
Item nr: 20875
Name: Front castor 4".
Item nr: 20819
Name: Front castor 5".
Item nr: 20814
Name: Front castor 6".
Item nr: 20817
Name: Front castor 7".
Item nr: 20976
Name: Front castors 7" wide.
Item nr: 20279
Name: Front castors 8".
Item nr: 24372



Castor out-riggers. Gives room for the feet under the chair.

Name: Distance block – front castors.
Item nr: 20664



Front castors with front forks.

Name: Front castors with front forks come in diff. sizes.
Item nr: See pricelist

Anti tip

The anti tippers except for Netti 4 U are adjustable in length and height. To adjust the height of the anti tip wheel, remove the three screws holding the adjusting tube. It can easily be turned around and functions like a tip bar when passing small steps like pavement etc.



Anti tip with tubes come in diff. sizes.

Name: Anti tip long vertical/short horizontal.
Item nr: 25419
Name: Anti tip long vertical/long horizontal.
Item nr: 25418
Name: Anti tip std. Mini short vertical/short horizontal to 20" – 24" main wheel.
Item nr: 25416
Name: Anti tip std. Mini long vertical/short horizontal to 24" – 26" main wheel.
Item nr: 25417



Anti tip with tubes come in diff. sizes.

Name: Anti tip extra long vertical/short horizontal.
Item nr: 25422
Name: Anti tip long vertical/long horizontal.
Item nr: 25423



The anti tip for Netti 4U can be adjusted in two fixed positions. Short position is for 12", 16" and 24" main wheel in upper position. The long position is for 24" main wheel in lower position.

Name: Anti tip Netti 4U models.
Item nr: 28018



As accessory anti tip with pedal can be delivered to Netti 4U.

Mounting

Netti I/II/III, Svipp and Mini		
Description	Main wheel	Item nr.
Short/short, Mini	20" – 24"	25416*
Short/long, Mini	26"	25417
Long/short	20" – 24"	25419*
Long/long	26"	25418**
X long/short	20" – 24"	25422***
X long/long	26"	25423***

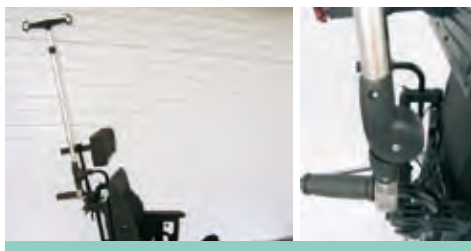
* Standard anti tip for standard wheelchairs and for Netti Mini with frame extender

** Netti Mini with frame extender

*** For wheelchairs with frame extender

Multi bar

The multi bar is mounted to the driving handle and can easily be adjusted from 1 to 4 hooks.



Multibar.

Name: Multibar.
Item nr: 24037

Netti wheelchair bag

For mounting on all kinds of Netti wheelchairs.



Netti Wheelchair bag.

Name: Netti Wheelchair bag.
Item nr: 28471

Electrical functions

Some users may benefit from electrical tilt, recline and elevating foot support. This enable the users to change the positioning and vary the sitting position themselves. Electrical functions can be supplied on Netti I Comfort, Netti II and Netti III Comfort chairs.



Electrical functions for tilt, recline and elevating foot support.

Electrical Power Pack

Most of the models of Netti I, Netti I comfort, Netti II and Netti III comfort can be mounted with little Viking power pack, F-16 power pack, E-Motion, E-Fix, Via-Mobile and Scala Mobil staircase climber. Alu Rehab does not sell these products but kits to prepare mounting of the power pack.

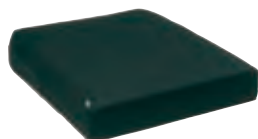


Contact us for information about spare parts.

Alu Rehab Seating System

– *always an alternative!*

Seat cushions



UNO|SEAT



VITAL BASE SIT



VITAL BASE VENTI



VITAL BASE ROYAL



VITAL BASE BONDI COXIT



INCONTINENCE COVER DRY

Backrest cushions



UNO|BACK in height 50 cm



VITAL BASE SMART
in height 38 cm Mini/48cm/60 cm



VITAL BASE STABIL
in height 38 cm Mini/48cm/60 cm



VITAL BASE SUPER STABIL
in height 48/60 cm



FLIP in height 38 cm

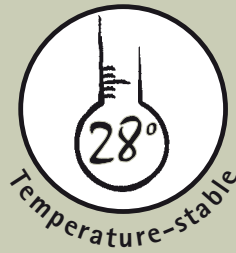
Alu Rehab takes Seating a major step forwards.

3 unique advantages associated with Alu Rehab's Seating Systems:



Always ready for use!

This means that it is not necessary to make any adjustments or pump up the cushions. We have already done this for you and have adapted them in order to achieve the best possible pressure distribution. The cushion is ready for use as soon as it has been placed in the chair. After use the cushion regains its shape and is ready for use again.



Stable temperature!

Research shows that a temperature of around 28°C next to the skin reduces the risk of pressure sores. An even temperature is also important for comfort and wellbeing. Because of this we have collaborated with Outlast® technology to develop a textile called ClimaTherm™ which has a stable temperature.



Ventilating!

Recent research on the development of pressure sores shows that dry skin reduces one's chances of developing pressure and moisture sores. In our textiles we have used a material that contains 96% air in order to provide ideal moisture transport and ventilation. Increased ventilation allows the skin to retain its elasticity, leaving the user dry and comfortable.

10 important advantages of Alu Rehab Seating Systems:

- Always ready for use
- Stable temperature
- Ventilating
- Very good pressure distribution
- Stabilising properties
- Many different sizes
- Lightweight
- Re-usable cushions
- Simple, stable Velcro chair attachments
- Washable

Why choose Alu Rehab Seating Systems?

Choosing a seat cushion with the right properties is something that greatly affects the overall development of pressure sores, although the seat cushion is not totally responsible for the whole process. The right back cushion with stabilising and pressure-distributing properties will optimise the properties of the seat cushion. Correct adjustment of the armrests, correctly positioned ergonomic leg supports and an active change of position are all equally important measures for achieving good results when trying to prevent the development of pressure sores.

We have wheelchairs and seating systems that combine to produce an integrated system. When our wheelchairs and seating systems are combined together, we produce one integrated system. With our advice and expertise, we will help to find the best seating system solution, together with the right properties, that help to create a better quality of lifestyle.

Common properties of Alu Rehab Seating Systems:

Documentation

All of our seat and back cushions have been tested and approved in accordance with the following standards: NS-EN 1021-1 and 2, ISO 7176-16/8191 -1 and 2 and ISO/DIS 16840-2.

Textiles

We have used different types of textiles for our various different seat cushions in order to optimise their properties and in accordance with their areas of application.

Cushion materials/structure:

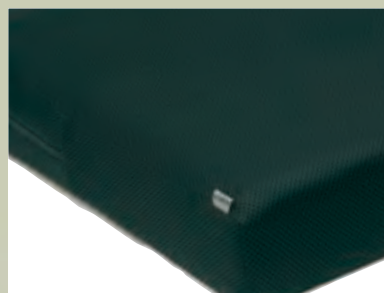
Our seat and back cushions are made from various types of polyurethane foam (PU) which because of its three-dimensional structure has three-dimensional elasticity and will always revert to its original shape. PU also has good ventilating properties, and this combination of properties is ideal for achieving a comfortable sitting position.

Maintenance

The outer covers are removable and can be machine-washed at 60°C. They can be spin-dried and also tumble-dried at a maximum temperature of 85°C. The core can be autoclaved and disinfected by using Virkon S.



3D



Name: 3D
Material: 100% polyester.
Properties: Ventilating, elastic and durable.
Special properties: Ventilating.

Nimba Tex



Name: Nimba Tex
Materials: Polyester + polyurethane.
Properties: Durable, «breathable», elastic and easy-care.
Special properties: Prevents contamination of the cushion core.

ClimaTherm™



Name: ClimaTherm
Materials: 3-layer Amman: Trevira CS.3D: 100% polyester.
Outlast: PCM (phase change material – see below for further details).
Properties: Stable temperature, ventilating, elastic and durable.
Special properties: Stable temperature.

Outlast



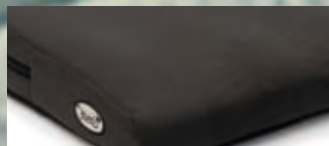
Name: Outlast (PCM – Phase Change Material)
Materials:
Properties: Adjusts to the body's temperature, prevents over-heating and perspiration, less cold, active temperature regulator. Outlast can absorb, store and release surplus body heat.

Easy Care



Name: Easy Care
Materials: Polyester + polyurethane.
Properties: Durable, «breathable», elastic and easy-care.
Special properties: Easy-care and easy to wash.

Mars



Name: Mars. **Materials:** Trevira (100% polyester). **Properties:** Durable, «breathable» and easy-care.
Special properties: Textile for child cushions. Easy-care.

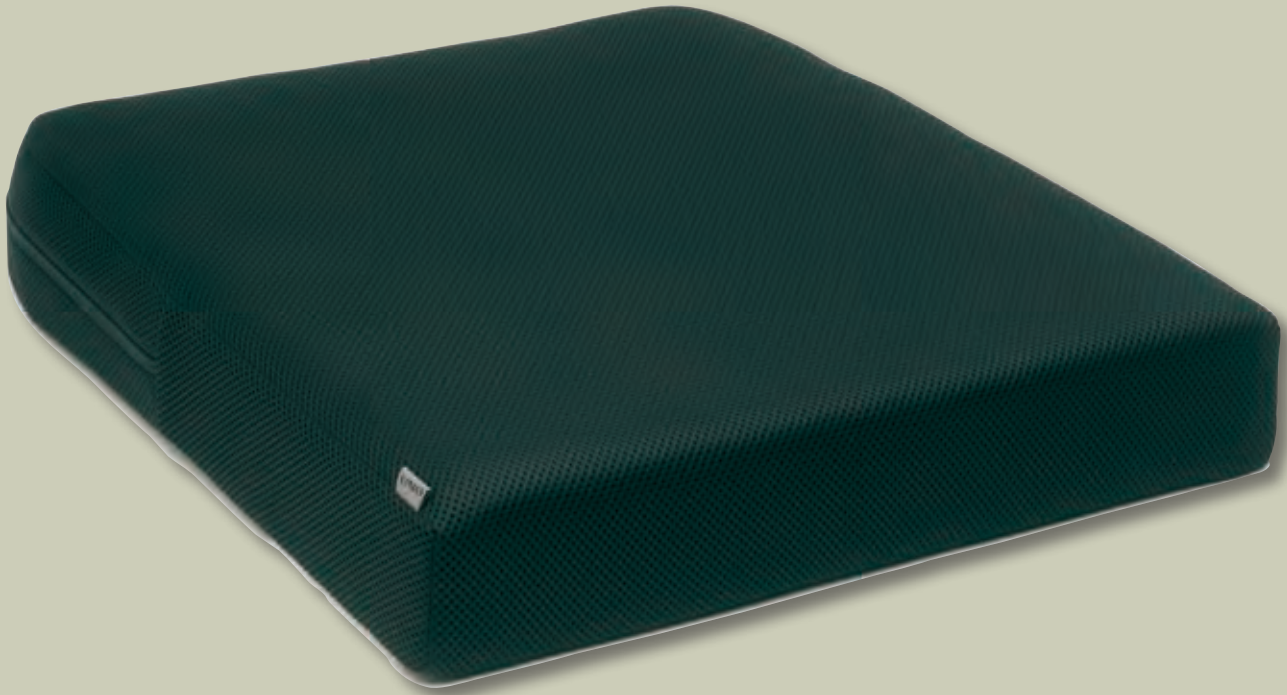
Jaguar



Name: Jaguar. **Materials:** Polyester + nylon. **Properties:** Durable, «breathable» and easy-care.
Special properties: Textile for child cushions. Easy-care.

UNO|SEAT

– an excellent and reasonable alternative!



- Documented pressure-distribution and stabilising properties
- Always ready for use!



This cushion measures 8 cm at the front and 8 cm at the back and weighs 0.7 kg in size 40x40 cm.

Properties:	Unsuitable	Suitable	Eminently suitable	Highly suitable
Temperature-regulating		X		
Ventilating			X	
Pressure-distributing				X
Stabilising			X	
Corrective		X		
Wheelchair with flat seat				X
Wheelchair with sling seat*				X
Transportable and lightweight				X
Washable			X	
Many different sizes				X
Always ready for use				X

* With a Plus-Base or Vital Base Integral which will prevent the bad hammock effect.

VITAL BASE SIT

– the classic!



- Excellent feedback from satisfied users during the last 15 years
- Documented pressure-distribution and stabilising properties
- Always ready for use!



Pressure-distributing



Stabilizing



Ready for use

This cushion measures 8 cm at the front and 8 cm at the back and weighs 1 kg in size 40x40 cm.

PRODUCED IN NORWAY

Properties:	Unsuitable	Suitable	Eminently suitable	Highly suitable
Temperature-regulating		X		
Ventilating			X	
Pressure-distributing				X
Stabilising			X	
Corrective		X		
Wheelchair with flat seat				X
Wheelchair with sling seat*				X
Transportable and lightweight				X
Washable			X	
Many different sizes				X
Always ready for use				X

* With a Plus-Base or Vital Base Integral which will prevent the bad hammock effect.

SEAT CUSHIONS

VITAL BASE VENTI

– a refreshing experience!



- Maximum ventilation
- Documented pressure-distribution and stabilising properties
- Lightweight
- Always ready for use!



This cushion measures 8 cm at the front and 8 cm at the back and weighs 1 kg in size 40x40 cm.

PRODUCED IN NORWAY

Properties:	Unsuitable	Suitable	Eminently suitable	Highly suitable
Temperature-regulating			X	
Ventilating				X
Pressure-distributing				X
Stabilising		X		
Corrective		X		
Wheelchair with flat seat				X
Wheelchair with sling seat*			X	
Transportable and lightweight				X
Washable				X
Many different sizes				X
Always ready for use				X

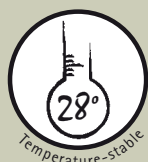
* With a Plus-Base or Vital Base Integral which will prevent the bad hammock effect.

VITAL BASE ROYAL

– Not too hot, not too cold!



- Stable temperature on outer cover
- Documented pressure-distribution and stabilising properties
- Many different sizes adapted to suit the weight of the user
- Always ready for use!



This cushion measures 8 cm at the front and 8 cm at the back and weighs 2.5 kg in size 40x40 cm.

PRODUCED IN NORWAY

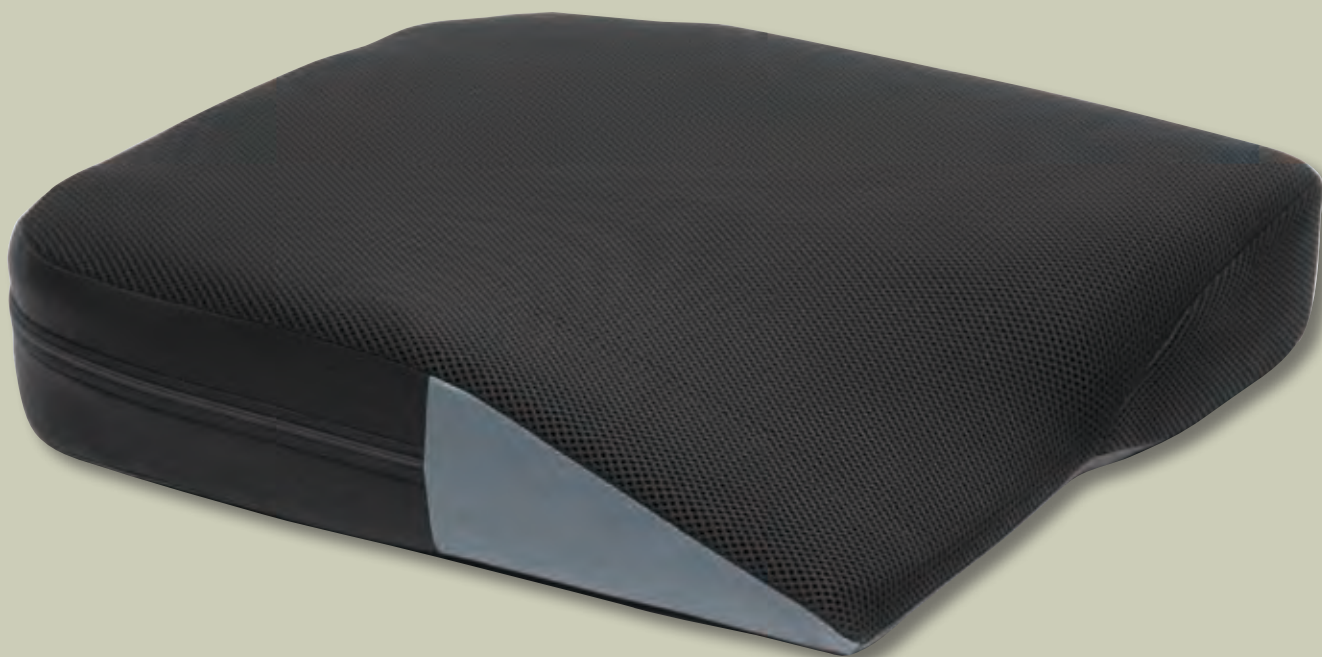
Properties:	Unsuitable	Suitable	Eminently suitable	Highly suitable
Temperature-regulating				X
Ventilating		X		
Pressure-distributing				X
Stabilising				X
Corrective		X		
Wheelchair with flat seat				X
Wheelchair with sling seat*				X
Transportable and lightweight			X	
Washable			X	
Many different sizes				X
Always ready for use				X
Shock absorbing				X

* With a Plus-Base or Vital Base Integral which will prevent the bad hammock effect.

SEAT CUSHIONS

VITAL BASE BONDI COXIT

– for users with stiff hips or those who want to foot-propell!



- Provides extra room for movement
- Documented pressure-distribution and stabilising properties
- Always ready for use!



This cushion measures 8 cm at the front (and goes down to 2 cm on the uncut side) and 8 cm at the back and weighs 1 kg in size 40x40 cm.

PRODUCED IN NORWAY

Properties:	Unsuitable	Suitable	Eminently suitable	Highly suitable
Temperature-regulating		X		
Ventilating			X	
Pressure-distributing				X
Stabilising			X	
Corrective		X		
Wheelchair with flat seat				X
Wheelchair with sling seat*				X
Transportable and lightweight				X
Washable			X	
Many different sizes				X
Always ready for use				X
Users with stiff hips or those who want to foot-propell				X

* With a Plus-Base or Vital Base Integral which will prevent the bad hammock effect.

INCONTINENCE COVER – DRY



Our incontinence covers prevent fluids from penetrating into our cushions and they are also ventilating.

The elasticity of these covers protects the pressure-relief effects created by our cushions.

Dry is easy to fit and suitable for most cushions on the market.

This incontinence cover can be washed at 60°C, spin-dried and tumble-dried.

PRODUCED IN NORWAY



SEAT CUSHIONS

UNO|BACK

– the simple solution!



- Good, firm back cushion with lumbar and side support
- Can be adjusted to suit individuals – progressive height adjustment
- Ventilating outer cover



Back height supplied: 50 cm.

Properties:	Unsuitable	Suitable	Eminently suitable	Highly suitable
Temperature-regulating outer cover			X	
Lumbar support		X		
Stabilising – side support		X		
Height adjustable				X
Resting in a wheelchair – comfort			X	
Wheelchair with Velcro back				X
Always ready for use				X

VITAL BASE SMART

– the classic!



- For users who need to be comfortable
- Good lumbar support and moderately good side support
- Ventilating outer cover
- Can be adjusted to suit individuals – progressive height adjustment



Back heights supplied: 38 cm Mini, 48 cm and 60 cm.

PRODUCED IN NORWAY

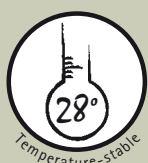
Properties:	Unsuitable	Suitable	Eminently suitable	Highly suitable
Temperature-regulating outer cover			X	
Lumbar support			X	
Stabilising – side support			X	
Height adjustable				X
Resting in a wheelchair – comfort			X	
Wheelchair with Velcro back				X
Always ready for use				X

VITAL BASE STABIL

– greater stability!



- Provides increased comfort and relaxation
- Very good lumbar support and deep side support
- Ventilating outer cover with a stable temperature
- Can be adjusted to suit individuals – progressive height adjustment



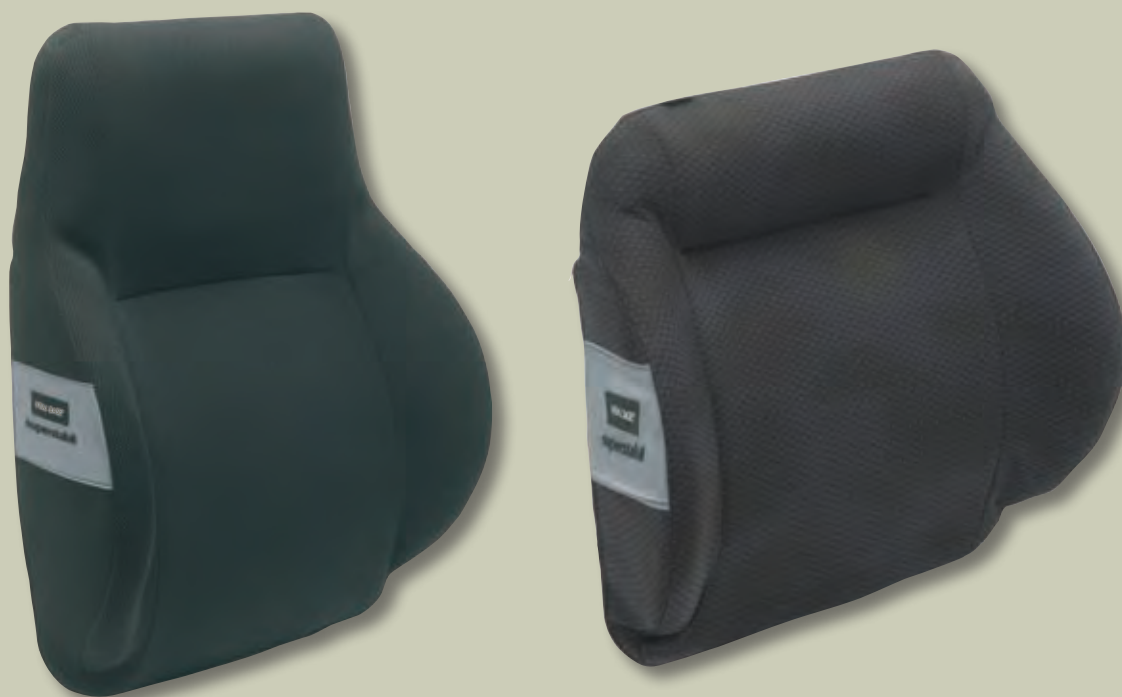
Back heights supplied: 38 cm Mini, 48 cm and 60 cm.

PRODUCED IN NORWAY

Properties:	Unsuitable	Suitable	Eminently suitable	Highly suitable
Temperature-regulating outer cover				X
Lumbar support			X	
Stabilising – side support				X
Height adjustable				X
Resting in a wheelchair – comfort				X
Wheelchair with Velcro back				X
Always ready for use				X

VITAL BASE SUPER STABIL

– several adjustment options!



- For users requiring a high degree of support and stability
- Very good lumbar support and deep side support
- Ventilating outer cover with a stable temperature
- Can be adjusted to suit individuals – progressive height adjustment



Back heights supplied: 48 cm and 60 cm.

PRODUCED IN NORWAY

Properties:	Unsuitable	Suitable	Eminently suitable	Highly suitable
Temperature-regulating outer cover				X
Lumbar support				X
Stabilising – side support				X
Height adjustable				X
Resting in a wheelchair – comfort				X
Wheelchair with Velcro back				X
Always ready for use				X

FLIP BACK CUSHION

– simple back padding!



- Provides room for movement
- Ventilating outer cover
- Can be combined with lumbar support and corrective side support

Back height supplied: 48 cm.

PRODUCED IN NORWAY

Properties:	Unsuitable	Suitable	Eminently suitable	Highly suitable
Temperature-regulating outer cover			X	
Lumbar support*	X			
Stabilising – side support**	X			
Height adjustable	X			
Resting in a wheelchair – comfort	X			
Wheelchair with Velcro back				X
Always ready for use				X

* Flip is eminently suitable when using loose lumbar support inserted between the Velcro back and the cushion.

** Side support correction can be fitted so that the cushion becomes eminently suitable.





www.alurehab.com

ALU REHAB™
Thinking ahead - moving forward

ALU REHAB AS
Bedriftsveien 23, No-4353 Klepp stasjon
Tel. +47 51 78 62 20, Fax +47 51 78 62 21
E-post: post@alurehab.com
www.alurehab.com

«DEALER»: