



Configura® User Guide

Introduction

This User Guide applies to the Configura® rise and recline chair by Accora.

Please read carefully before setting up and using the chair and keep in a safe place for future reference.

These instructions include details of the performance of the chair. If the chair malfunctions, shows signs of damage, excessive wear, or otherwise feel unsuitable, please take it out of service and contact your supplier immediately.

The Configura® should be regularly checked to ensure the setup is correct and it is working as intended for the user.

Warning: do not allow children or animals to play with or near the chair.

Chair Specification

The Configura® is a configurable seating solution for varied and changing user needs. The ability to configure the size, pressure and posture requirements allows the chair to be used for many different user requirements. It is particularly suitable for Equipment Loan Store use as the chair can be easily re-issued.

The chair configuration is prescribed by a healthcare professional. **Any changes to the specification of the chair should only be made after consultation with a healthcare professional.**

Weight capacity:

Small = 20 stone

Medium = 25 stone

Large = 25 stone

Medium Low Profile = 20 stone

Large Low Profile = 20 stone

User Groups

Appropriate for:

- Ambulant, semi-ambulant and non-ambulant users
- Moderate postural requirements
- Accommodation and encouragement of good posture
- Users at some risk of pressure damage
- Users with Neurological conditions
- Users with a Kyphosis
- Users with oedemas legs and/or fluid build-up

Not appropriate for:

- Demanding postural requirements
- Users with fixtures and contractures
- Users with a limited extension at the knees
- Users who need to be transported from room to room
- Bariatric users

Using the Handset

Single Motor Tilt-in-space



Button 1 – back up, footrest down, chair rises



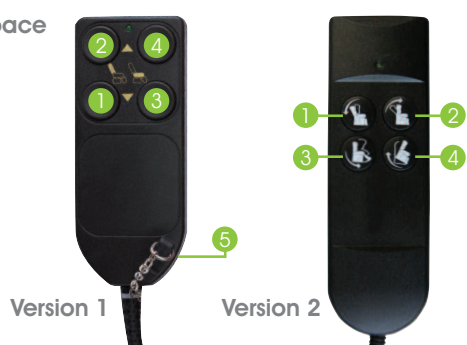
Button 2 – chair lowers, footrest up back down and tilts back



Button 3 – key lock

Always warn the user before changing the position of the chair.

Dual Motor Tilt-in-space



Button 1 – back up, footrest down, chair rises



Button 2 – chair lowers, footrest up back down and tilts back



Button 3 – backrest reclines



Button 4 – backrest up



Version 1 only: Button 5 – key lock

Always warn the user before changing the position of the chair.



Important notes re version 1 handset:

Important – the version two handset does not have a keylock function on the handset itself. The chair is now disabled by disconnecting the handset on the handset lead. Please see above picture.

It is very important that carers and users are familiar with how to disconnect the chair.

The version one handset will be available while stocks last by special request.

Initial Installation

Prior to installation and use, please ensure the chair will not be obstructed by any object as this will affect the performance and could damage the mechanism.

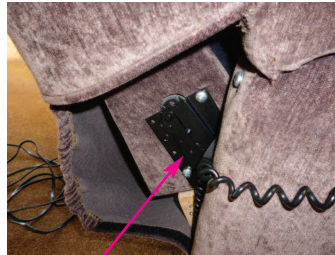
- Position the chair free from any obstruction and trailing wires.
- Position the back onto the brackets. You will find a small lever attached to the bracket, which should be pushed forwards to lock the back into position.

Unlocked position:



Lever

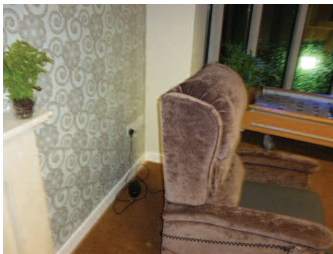
Locked position:



Lever locked

- The chair should be positioned with enough room for the chair to fully recline. If the chair is allowed to touch the wall behind, it will damage the mechanism.

Correct positioning
(sufficient space to recline):



Incorrect positioning
(too close to the wall):



- There is an extension cable at the rear of the chair. For safety reasons check this cable has not been damaged in transit. Plug cable into the transformer as shown.



- After connecting the transformer, plug the unit into the power source and switch on power ready for use.



- **Please do not plug the Configura® into an extension lead.** The chair must have a dedicated supply.

General Notes

- When transferring into the chair, it is very important that the chair is either in a fully lowered position or raised more than half-way up. If the user transfers into the chair when it is slightly raised, it will damage the mechanism of the chair.

Correct transfer position:



Incorrect transfer position:



- This product is not unsafe when power is left on.
- If you need to remove the backrest, release the locking clips and pull the back upwards.
- **When moving or handling the chair DO NOT use the backrest, use the base only.** Using the backrest may cause damage to the internal framework of the chair.
- When installing the Cushionair cushion, ensure the pipes are routed correctly through the back of the chair to avoid them catching and crushing when the chair is reclined. Test the pump and cushion to ensure it inflates correctly before use. This cushion should be checked daily for correct operation.

Correct positioning of cushion pipes:



Incorrect positioning of cushion pipes:



- Do not put heavy weights in the pocket
- Do not lift the Configura® by the armrests

Upholstery Care

- Small dust and dirt particles can increase wear and tear of the fabric and dull the surface appearance, therefore we recommend that you brush your furniture regularly using a soft brush or lightly vacuum.
- Accora cannot be held responsible for any damage caused by cleaning.
- Your upholstery should not be exposed to direct sunlight for long periods of time as this will cause your upholstery to fade. If your furniture is positioned where it is exposed to sunlight for prolonged periods, ensure your curtains and blinds are drawn for protection.
- Ensure your furniture is protected from sharp objects or buckles as these may cause the fabric to snag. If this occurs do not pull the thread, carefully trim it with scissors.
- Do not allow animals onto this furniture as their claws may cause damage to the fabric. Animals also have a degree of oil in their coats, and this may transfer to the upholstery causing premature wear.

Cleaning

1. To remove light stains use warm water and an ordinary detergent.
2. Scrape off solids, do not scrape against the grain of the fabric.
3. More difficult stains will benefit from a safe solvent such as Isopropyl Alcohol or Mineral Spirit.
4. Do not dry clean and do not immerse the fabric fully in water.

Troubleshooting

If the chair does not work, please check the following before calling an engineer:



1. Check the chair is plugged in at the wall.
2. Check the wall socket is in working order by trying another appliance.
3. Check the connection from the chair to the transformer.



4. Check the chair is positioned with sufficient space to recline and is free from any obstructions:



5. If your chair is fitted with a Cushionair powered cushion, please check the following before calling an engineer:

- Check the cushion is plugged in at the wall
- Check the pipes are connected correctly





Configure



Deliver



Adjust



Recycle



Training



Charter House
Barrington Road
Orwell
Cambridge
SG8 5QP

T: 01223 206100
F: 01223 206120
info@accora.uk.com
www.accora.uk.com

Registered to ISO 9001:2008